



**İZTER**  
SHIP REPAIR

A large ship is being repaired at a shipyard at night. The ship is illuminated by bright lights, and its reflection is visible in the water. A large crane is positioned in front of the ship, and other industrial structures are visible in the background.

**IZTER SHIPYARD AND SHIP REPAIR IS THE  
INDUSTRY'S LEADING SHIP REPAIRER WITH  
EXPERTISE**

**TO UNDERTAKE THE ENTIRE SPECTRUM OF  
REPAIR WORK FOR A VARIETY OF VESSELS.**

## ***OUR MISSION***

To provide a service or product meeting our client requirements in an ethical, professional, safe and environmentally friendly manner; to create the difference in our industry with an effective and profitable service approach in line with the service value chain at international quality standards; to maintain efficiency and quality at a high level with our continuous growth approach; to treat employees with respect and ensure a healthy, positive and safe working environment; to provide added value to our team members and our country.

## ***OUR VISION***

To carry out shipyard and ship repair activities in full compliance with national and international rules; maintaining the highest quality with increasing our knowledge and experience; to be preferred by our clients with our competitiveness, customer satisfaction, to be trusted with our experience; to protect the environment with safety operations and adopting the environmental requirements all the time; expanding with qualified partners and stakeholders according to our values.

## ***OUR VALUES***

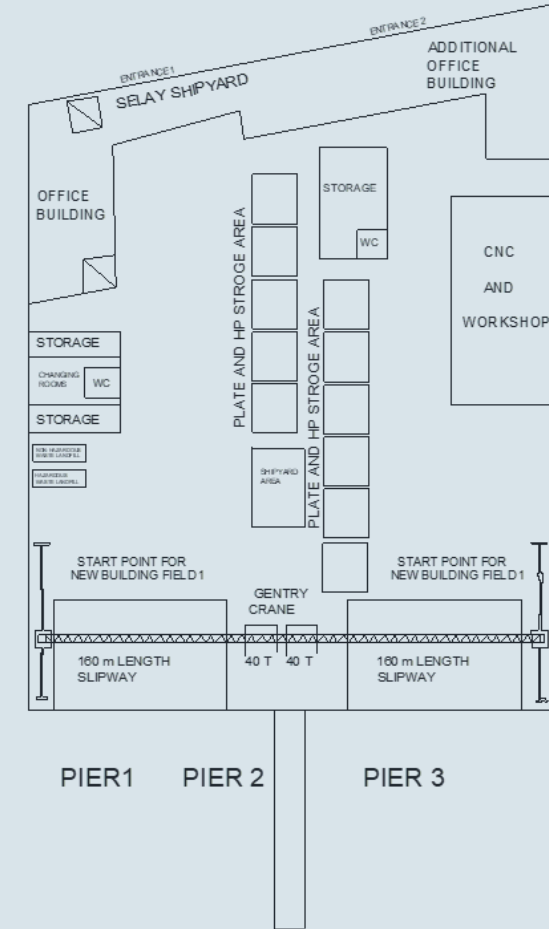
 **INTEGRITY****HIGH  
QUALITY****RELIABILITY****SOLUTION  
ORIENTED****LOYALTY**



## İZTER SHIPYARD AND SHIP REPAIR FACILITIES

1. 15.000 sqm total area
2. 3.500 closed area
3. Floating Dock 1: 180m x 38m
4. Pier 1: 185m x 24m, Draft: 6m
5. Pier 2: 240m x 28m, Draft: 6m
6. Slipway 1: 160m x 24m (Up to 2500 tons Lightship)
7. Slipway 2: 160m x 18m (Up to 3000 tons Lightship)
8. Mobile Crane 1: 110 Tons, Mobile Crane 2: 45 Tons
9. Tower Crane 1: 75m, 12 Tons (In Progress)
10. Tower Crane 2: 75m, 12 Tons
11. Tower Crane 3: 50m, 40 Tons
12. Workshops: 24m x 12m (6 units)
13. Warehouse & CNC Bending Area: 24m x 3m
14. Head Office
15. Hangars: 60.5m x 24.5m (3 units)
16. Main Gate

## LAYOUT





### **Block Assembly Hall**

Regular blocks and cruised blocks are assembled on a slipper and the hall has an annual steel processing capacity of 10000 tones.

### **Steel Cutting Area**

1 Unit protom CNC cutting machine and 1 Unit esab CNC cutting machine on 4\*12 m2) CNC pulls , capacity of 10 tones magnetic lifting devices store area.



### **Bending Area**

The hydrolic presser which has the capacity of 200 tones and is the width of 3m.

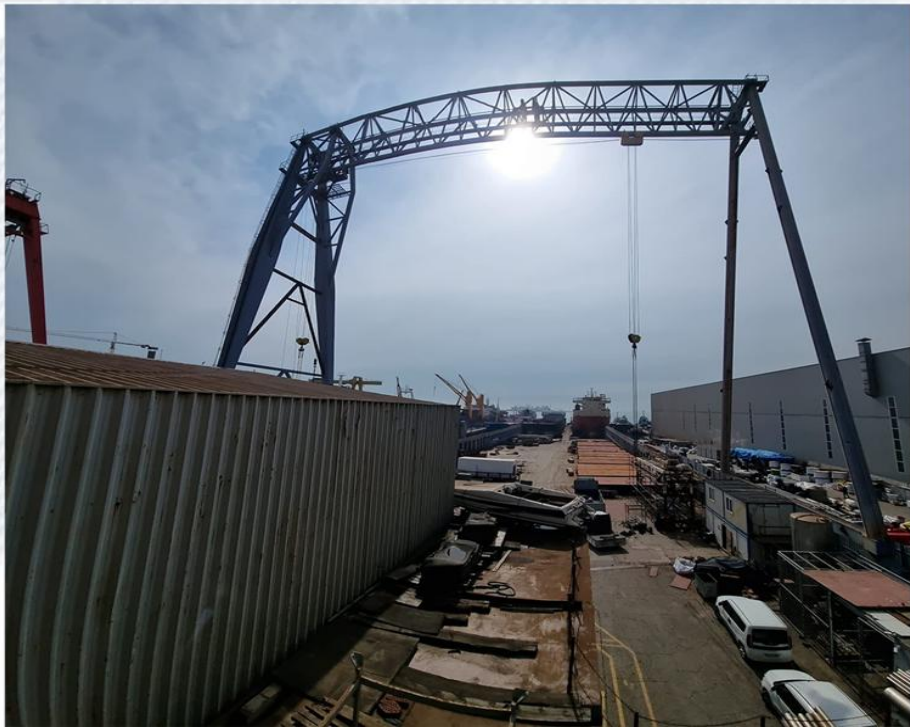




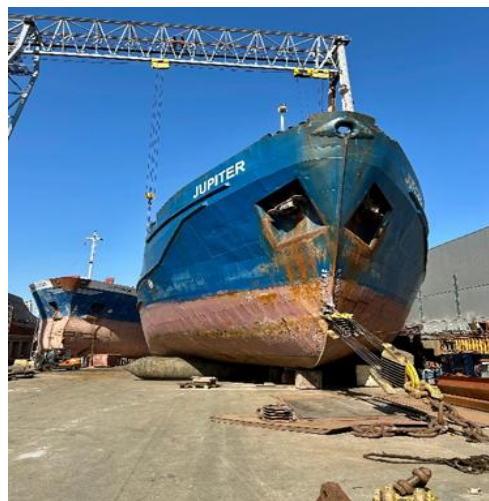
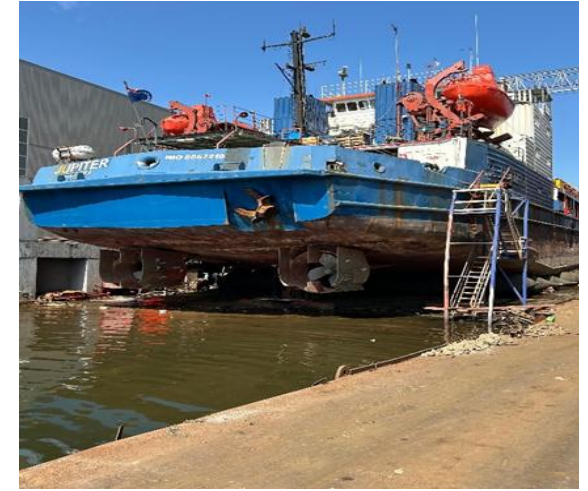
The workshop has 1.500 sqm closed area with a capacity of up to 2.000 dia-inch /day fabrication of steel stainless and copper pipes for cargo, ballast, heating and hydraulic system. The workshop is capable of cold bending and high quality pipe fabrication with dedicated workers. Stainless steel mild steel pipe works are manufactured in two separated floors.



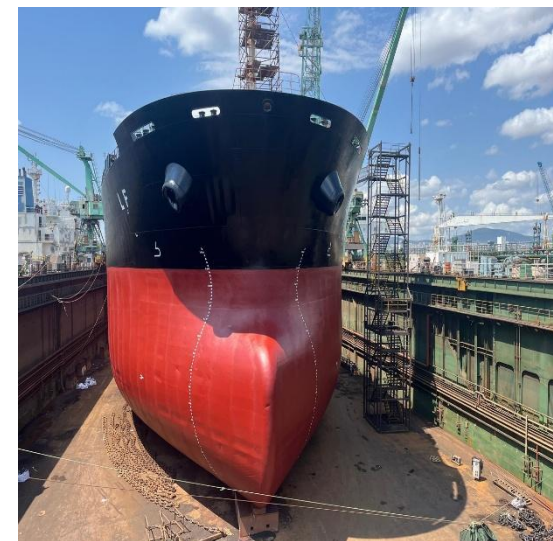
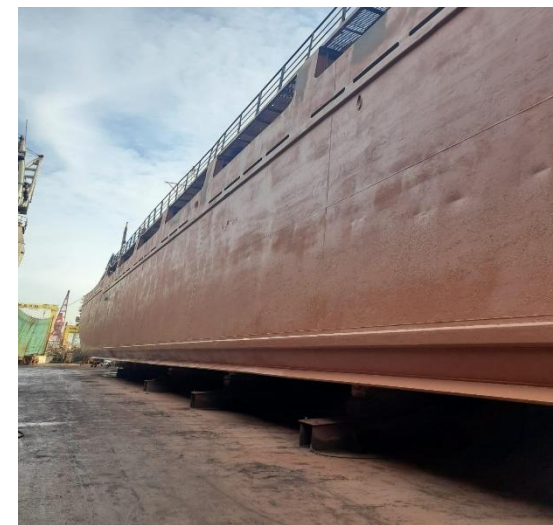
The 2.100 sqm storage facility is managed by an online stock program which enables the shipyard the provide efficient logistic services for ship building and ship repairing.



## SLIPWAY



## ***DOCKING/UNDocking***

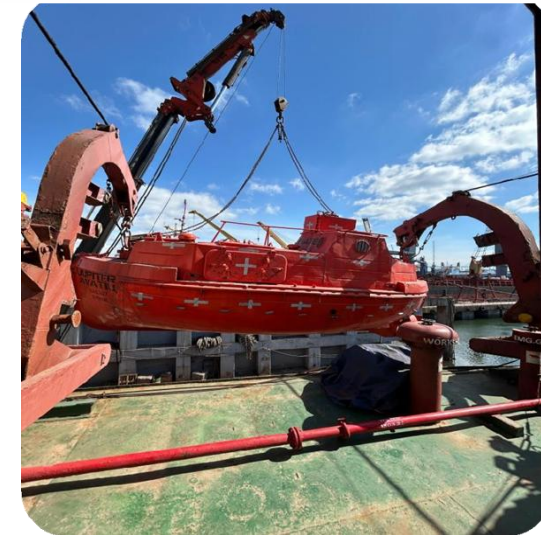
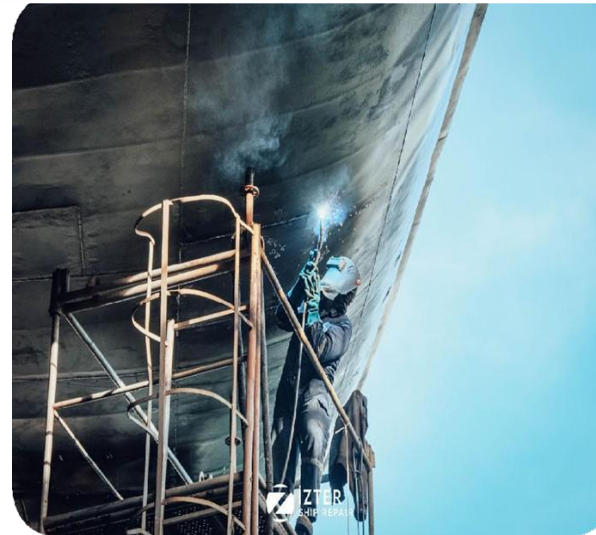


## OUR SERVICES

Our services, productions and repair stages are carried out by skilled and certified workers and controlled by expert engineers.

İZTER Shipyard and Ship Repair offers wide range of shipyard services;

- Piping Works
- Steel Works
- Electrical Works
- Valve Works
- Blasting & Painting Works
- Docking & Undocking Works
- Special & Intermediate Surveys
- Engine, Machinery & Propulsion Systems
- Hydraulic & Pneumatic System Repairs
- Repairs of Deck Machinery, Cranes
- Shaft Propeller-Rudder Works





## **PIPING WORKS**

Renewal of following piping systems  
Dismantling of old cracked, bended, leaking, weak and decomposed pipes as per marking and manufacturing new pipes as isometric in workshop. NDT controls in workshop and fitting place on board of the vessel. Pressure test and operation testing of renewed pipe systems and delivering to the ship.

Type of pipe materials used:

- Black pipes
- GRP pipes
- Stainless steel pipes
- CuNiFe pipes
- Galvanized pipes
- Aluminium pipes
- Hydraulic pipes
- Pipe isometrics and tracing systems

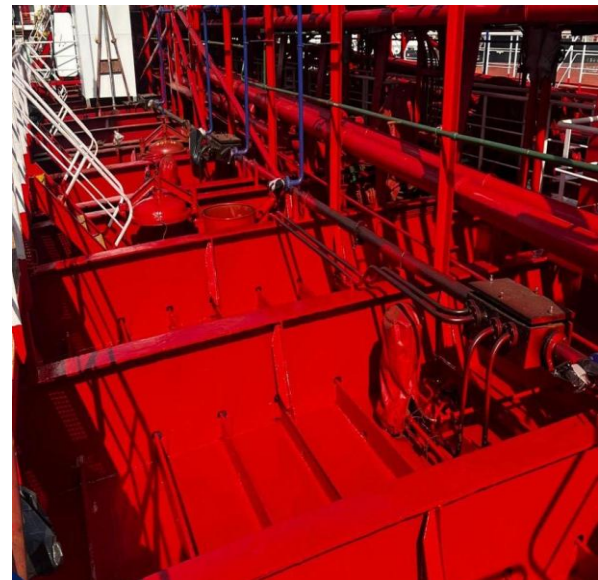
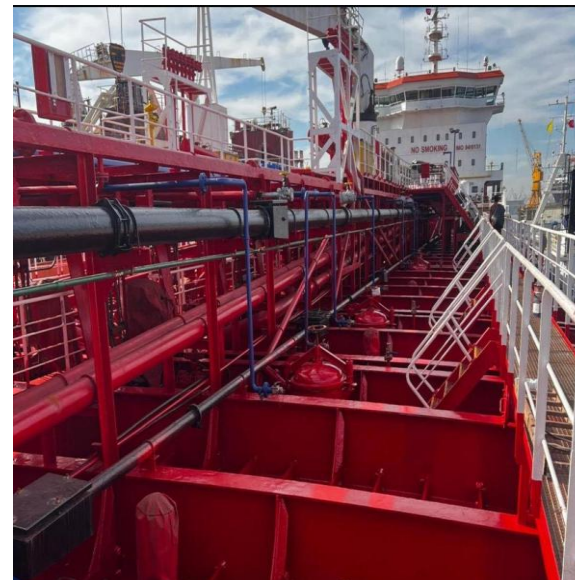
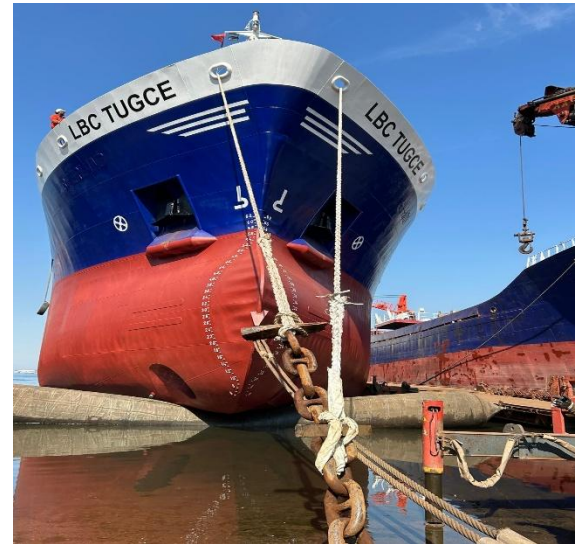
Pipe systems done:

- Bilge water system
- Ballast water system
- CO2 system

## ***BLASTING AND PAINTING WORKS***

General Blasting and Painting Works / Blasting and painting locations.

- ▮ Shell Plate blasting & painting works
  - ▮ Sea Chests, bow thruster, Rudder, bilge keel blasting & painting works
  - ▮ Cargo Hold blasting & painting works
  - ▮ Hatch cover blasting & painting works
  - ▮ Hatch cover underneath blasting & painting works
  - ▮ Hatch coamings blasting & painting works
  - ▮ Main deck and decks blasting & painting works
  - ▮ Accomodaiton blasting & painting works
  - ▮ Ballast tanks blasting & painting works
  - ▮ Engine room blasting & painting works
  - ▮ Fresh water tanks blasting & painting works
  - ▮ Chain locker blasting & painting works
- Surface preparations
- ▮ Washing applications
  - ▮ Sweeping grit blasting applications
  - ▮ SA1 grit blasting application



## ***ELECTRICAL WORKS***

Repairing & Maintenance of following electrical works:

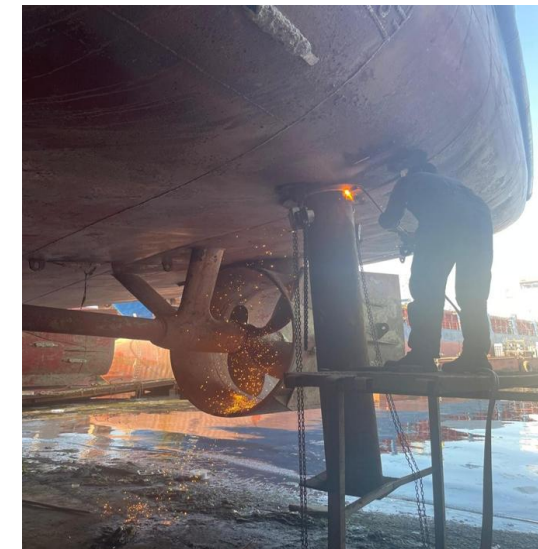
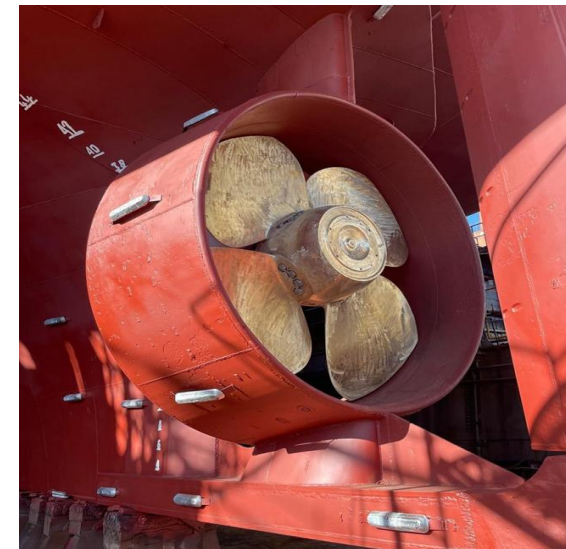
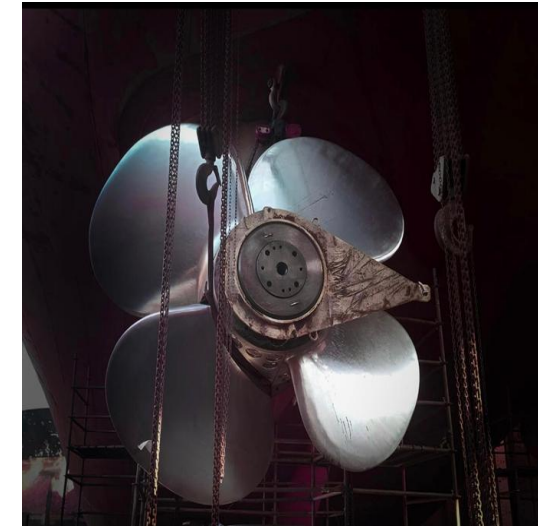
- General all kinds of cabling and cable renewal works
- General fan motors (ventilation, boiler, inert gas, sanitary fan)
- All kinds of electrical motor (pump, fan, bow thruster, exproof, etc)
- Rewinding of all kinds of electrical motor & coil winding
- Genset alternators
- Emg generator alternators
- Shaft generator alternators
- General cleaning and maintenance of main switchboard
- General cleaning and maintenance of emergency switchboard and other boards
- Balancing of impellers, rotors
- All kinds of calibration works (Temperature, pressure, sensors)
- Control (starter) panels
- Programming and paralelling works
- Trouble shooting and solution on controlling & command systems (Main engine, generators, steering gear, pitch control systems, cranes etc.)

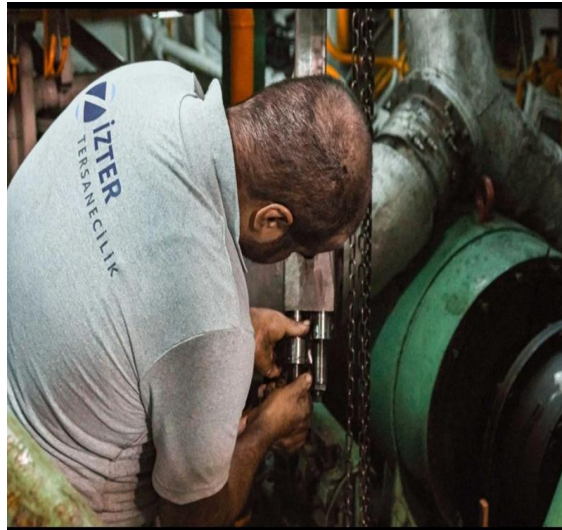


## SHAFT-PROPELLER-RUDDER WORKS

Repairing & Maintenance and renewal following work items:

- Dismantling and refitting of shaft coupling
- Withdrawal and fitting back of the shaft
- Dismantling and refitting of intermediate shaft
- Dismantling and refitting of fix propeller
- Dismantling and refitting of CPP propeller blades
- Renewal of simplex seals
- Machining of chrome layner
- Machining of propeller blade undersides
- Dismantling and refitting of shaft and rudder bearings
- Renewal and machining of shaft and rudder bearings
- Machining of bearing places on board
- Special stainless steel welding of shaft and rudder bearing places in workshop
- Machining of shaft and rudder bearing places





## MAIN ENGINE & GENERATORS

Maintenance and renewal if need following work items

Overhauling, cleaning, inspecting, maintenance, decarbonisation, renewing if need, testing, crack testings, before & after measurement and reporting and reassembling after finishing of all works with vessel supplied seals & o-rings and operation testing & delivering to the vessel:

- Air cooler
- Turbocharger
- Gavernor
- Fuel pumps
- Push rod, push rod roller Oil pump•Cam shaft
- Other maintenance works on engine:
- Cylinder head (Valve rotator, valve spring, inlet valve, rocker arm, exhaust valve)
- Exhaust manifold
- Piston, piston ring, piston pin
- Crank bearing, Crank shaft main bearing, tie bolts

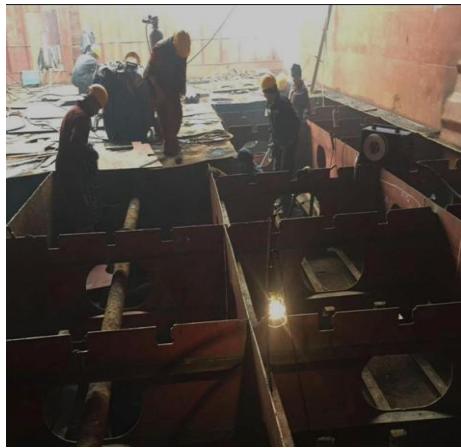
# STEEL WORKS

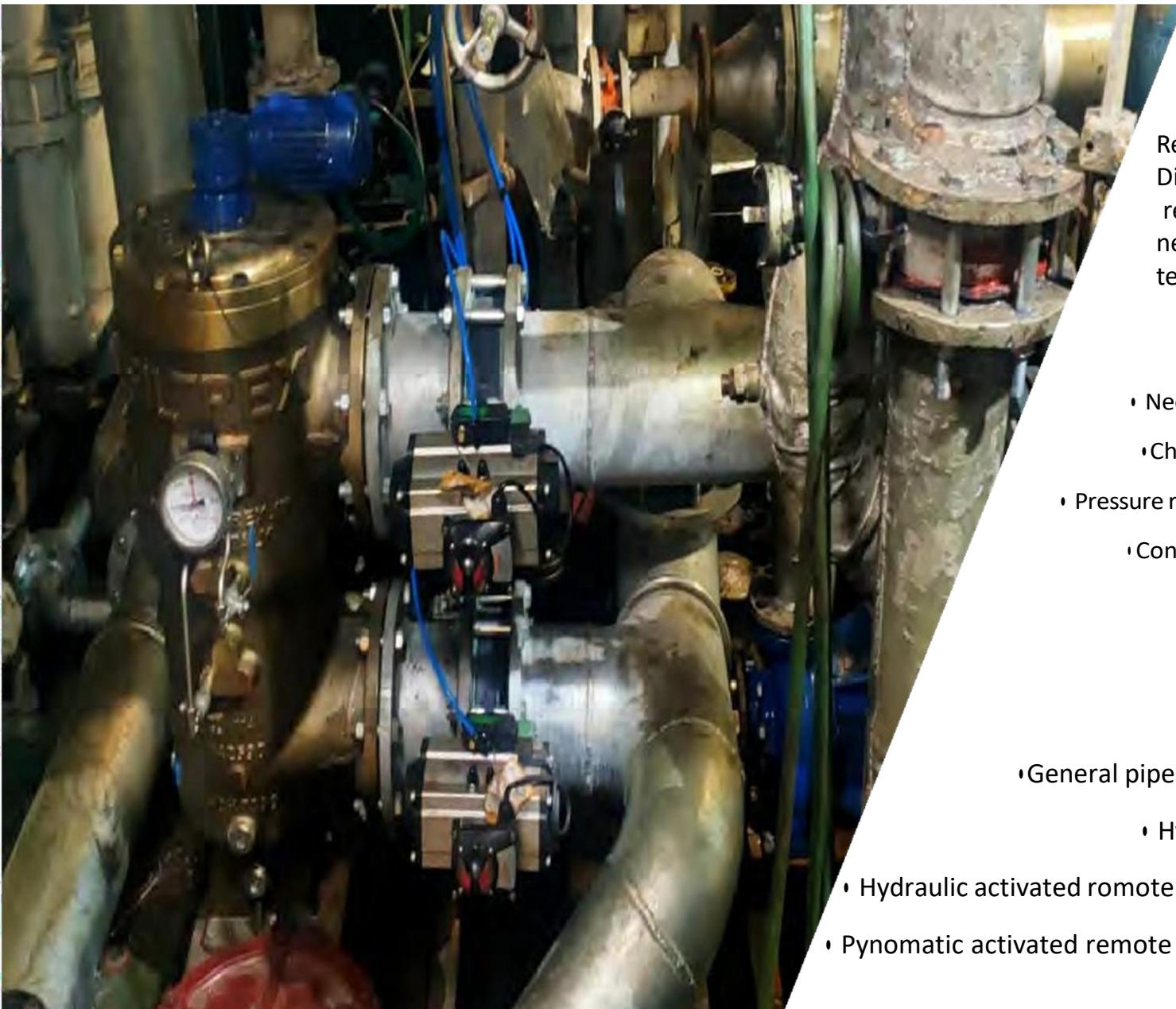
Renewal, repairing and straightening of following work items

Firstly NDT inspeciting, class inspecting and marking with paint of areas that will be renewed or will be straightened. Renewal of low thicker areas and steels in very bad condition and straightening of deformed areas as per marking by class and vessel representatives.

Other light steel work applications on board:

- |                                 |  |
|---------------------------------|--|
| • Cargo hatches & small hatches | • Chocks, rollers, bollards                                  |
| • Airvents                      | • Reinforcements   |
| • Skylights                     | • Ship names, draft marks, tank marks                        |
| • Manholes                      | • Gutter bars  |
| • Doors                         | • Compression bars   |
| • Ladders                       | • Foundations  |
| • Ventilations                  | • Windows  |
| • Platforms & ower platforms    | • Grills   |
| • Handrails, handgrips          | • Other small round bar, flat bar and angle bar applications |





## VALVE WORKS

Repairing and Maintenance of Valves:

Dismantling, maintenance, overhauling, cleaning, painting, lapping and renewal of seat, handwheel, rod, gasket, bolts, flap, gland packings if need and machining spindle, flap, rod. After finishing of all works testing and presenting to class & owner.

Type of pipe materials used:

- Needle valves
- Check valves
- Pressure relief valves
- Control valves
- Plug valves
- Storm valves
- Diaphragm valves
- Butterfly valves
- Mud-box
- Gate valves
- Globe valves
- Angle valves
- Ball valves
- Filter

Type of location valves:

- General pipe system valves
- Hydraulic valves
- Hydraulic activated remote control valves
- Pynomatic activated remote control valves
- Cargo valves
- Quick closing valves
- Reduction valves
- Isolation valves
- PV valves
- Overboard valves
- Sea chest valves
- Safety valves

## Our References



Ice Gas Holding Copmany

VI-ZA  STAR



**RHINESTONE**  
SHIP MANAGEMENT



## Class References

**ClassNK**



40°54'44.5"N

29°11'51.8"E

**İZTER SHİPYARD AND SHİP REPAIR DEMİR ÇELİK SAN. VE TİC. LTD.**

**Shipyard : Aydın-tepe Mahallesi Güzin Sokak No: 27 , 34947 Tuzla/İstanbul - Türkiye**

**Home Oficce : Aydın-tepe , İçmeler Kavşağı No:1, 34947 Tuzla/İstanbul - Türkiye**

**Head Office : Soğanlık Yeni mah. Pegakartal B Blok No:6-B/9 Kartal/İstanbul Türkiye**

**Tel : +90 216 494 21 44 - 0 549 680 0815**

**info@izter.com.tr**

**[www.izter.com.tr](http://www.izter.com.tr)**

**marketing@izter.com.tr**

